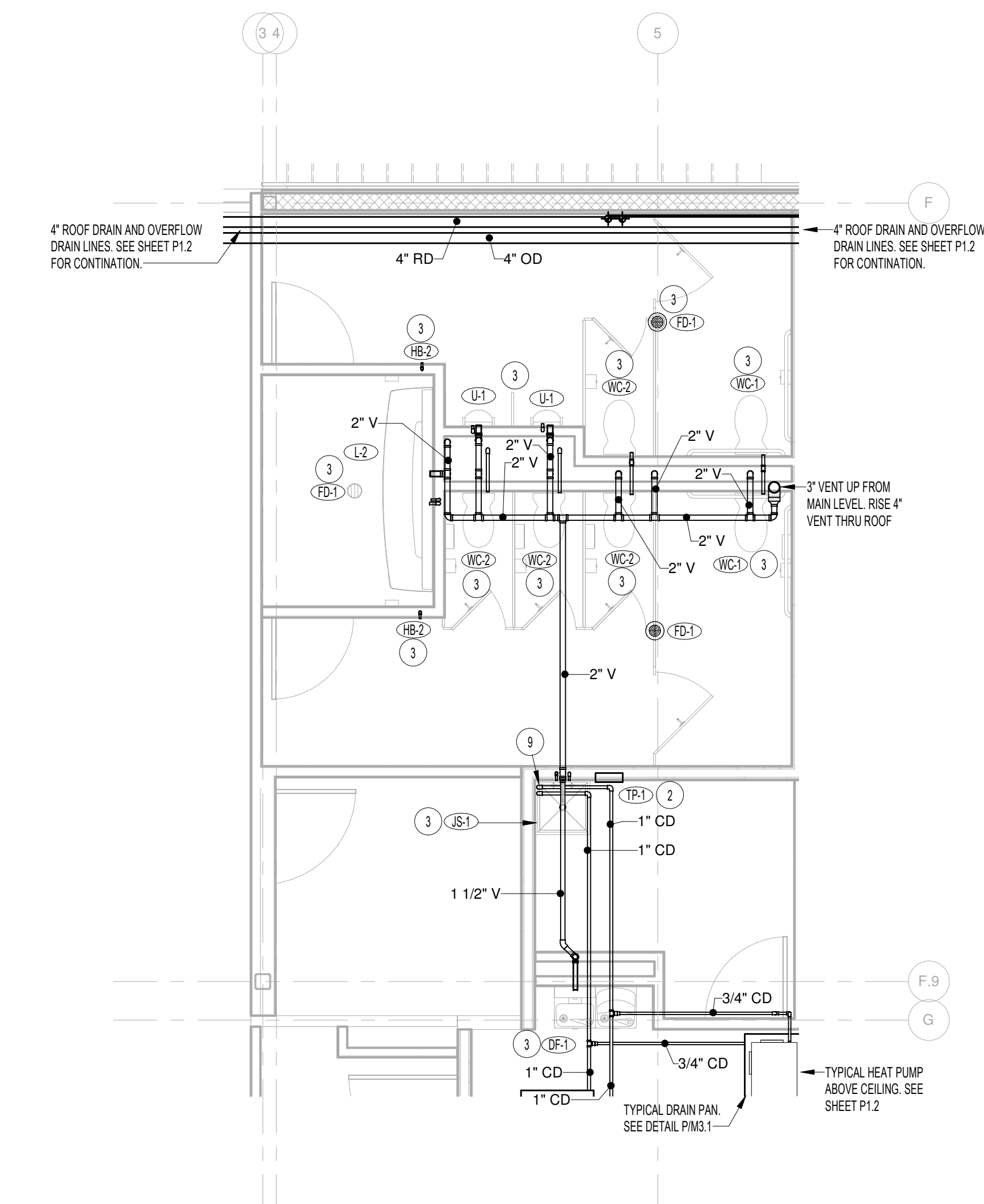
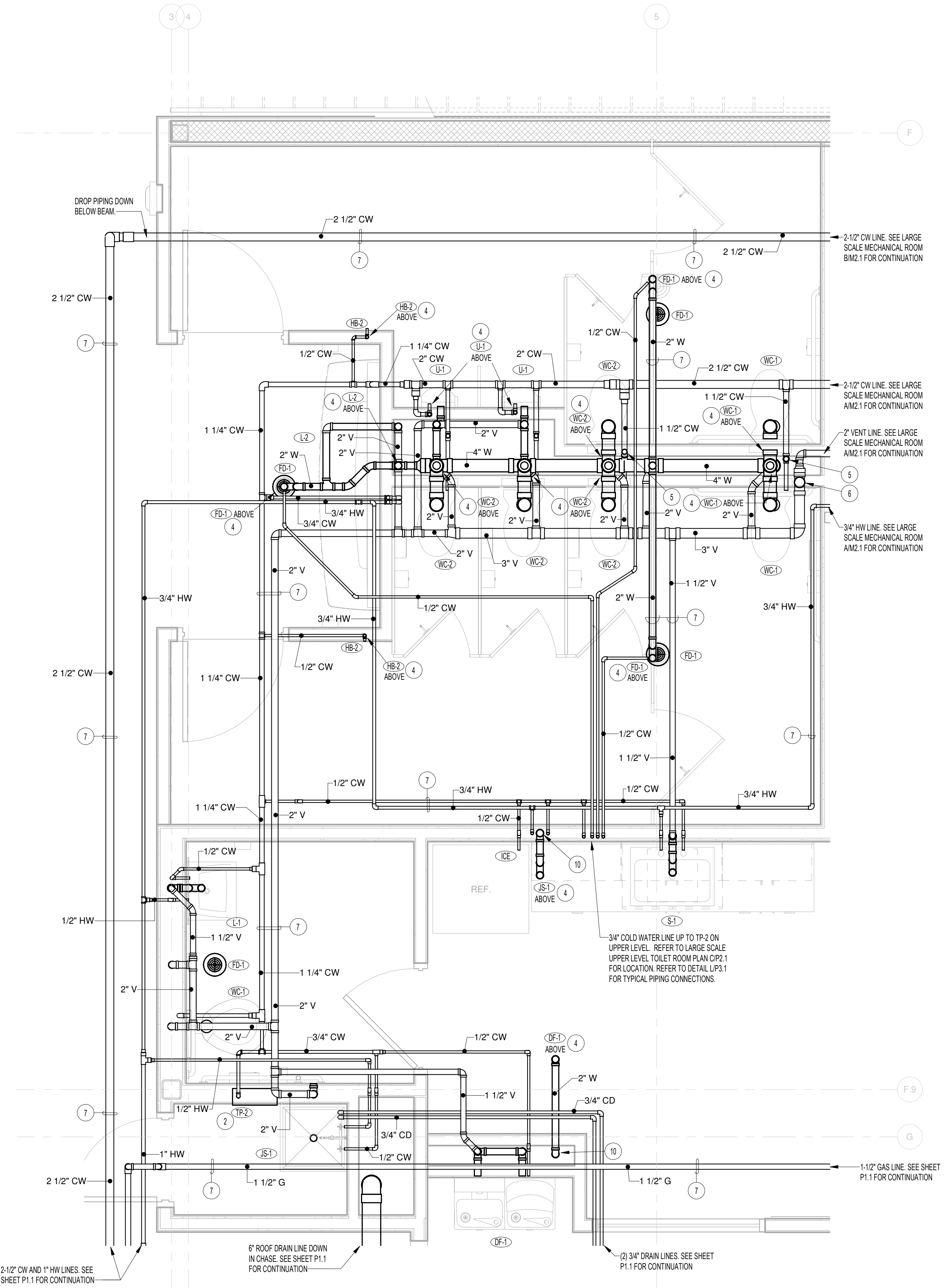


A
P2.1 LARGE SCALE FOUNDATION PIPING PLAN
SCALE: 1/4" = 1'-0"



C
P2.1 LARGE SCALE UPPER LEVEL TOILET ROOMS
SCALE: 1/4" = 1'-0"



B
P2.1 LARGE SCALE MAIN LEVEL TOILET ROOMS
SCALE: 1/2" = 1'-0"

PLAN NOTES:

- 1 GAS FIRED WATER HEATER FURNISHED AND INSTALLED BY PLUMBING CONTRACTOR. ROUGH-IN AND CONNECT 1-1/4" HOT AND COLD WATER LINE. RECIRCULATING PUMP. 3/4" GAS LINE COMPLETE WITH PRESSURE REGULATOR AND SHUT OFF VALVE. TEMPERED WATER MIXING VALVE. THERMAL EXPANSION TANK AND HEAT TRAP NIPPLES. REFER TO DETAIL FP2 FOR TYPICAL PIPING CONNECTIONS. REFER TO DETAIL NP3 FOR TYPICAL GAS LINE CONNECTION.
- 2 PROVIDE AND INSTALL TRAP PRIMER AS SPECIFIED. MOUNT IN WALL WITH LOCKING COVER. RUN SEPARATE 1/2" COLD WATER LINE FROM TRAP PRIMER TO EACH FLOOR. DRAIN AS SHOWN. REFER TO FOUNDATION PLAN AP.1 FOR PIPING AND TO DETAIL LP3.1 FOR TYPICAL TRAP PRIMER INSTALLATION.
- 3 INSTALL FIXTURES AS SPECIFIED. ALL WASTE AND WATER PIPING TO RISE UP THRU FLOOR AS REQUIRED FOR CONNECTIONS. REFER TO LARGE SCALE MAIN LEVEL TOILET ROOMS BP2.1.
- 4 RISE WASTE AND WATER PIPING UP THRU FLOOR ABOVE AND CONNECT TO UPPER LEVEL FIXTURES. REFER TO LARGE SCALE PLAN CP2.1 FOR FUTURE LOCATIONS. OFFSET PIPING AS REQUIRED TO COORDINATE WITH OTHER PIPING, DUCTWORK AND BUILDING STRUCTURE.
- 5 RISE 1-1/4" COLD WATER LINE UP FOR UPPER LEVEL FIXTURES AND DROP 1-1/4" COLD WATER LINE DOWN FOR MAIN LEVEL FIXTURES. REFER TO PLUMBING FIXTURE SCHEDULE FOR LINE SIZES TO INDIVIDUAL FIXTURES.
- 6 RISE 3" VENT UP THRU FLOOR ABOVE. REFER TO LARGE SCALE PLAN CP2.1 FOR CONTINUATION. EXTEND 4" VENT THRU ROOF.
- 7 RUN ALL PIPING ABOVE CEILING AS SHOWN. WHERE THERE IS NO CEILING, RISE PIPING UP AND RUN THRU JOIST SPACE. COORDINATE PIPING WITH BUILDING STRUCTURE, DUCTWORK AND OTHER PIPING.
- 8 COORDINATE WASTE PIPING BELOW FLOOR WITH FOOTINGS AND FOUNDATION WALLS. GRADE WASTE LINES AT 1/4" PER FOOT.
- 9 DROP (2) 1" DRAIN LINES DOWN TO SERVICE SINK. TERMINATE AT 1" BELOW SINK RIM. REFER TO DETAIL BP1.1 FOR TYPICAL INSTALLATION.
- 10 DROP 2" WASTE LINE FROM FIXTURE ON UPPER LEVEL DOWN IN WALL. REFER TO LARGE SCALE FOUNDATION PLAN AP.1 FOR CONTINUATION.

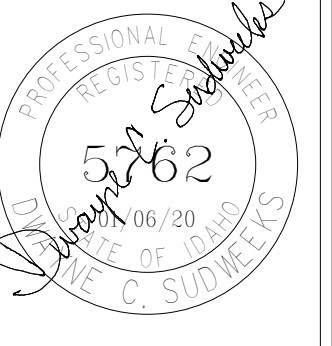
HUMMEL
 a: 2785 North Bogus Basin Road
 Boise, Idaho 83702
 p: (208) 343.7523
 f: (208) 343.0940

Project:
**POCATELLO HIGH SCHOOL -
 ADDITION & RENO.**

325 N ARTHUR AVE
 POCATELLO, ID 83204

Sheet:
**LARGE SCALE PLUMBING
 PLANS**

Revisions: Δ



Engineered Systems Associates
 1355 EAST CENTER
 POCATELLO, IDAHO 83201
 PHONE: (208) 233-0501
 FAX: (208) 233-0529
 EMAIL: esa@engsystems.com
 ESA JOB NUMBER: 18075

Project No: 18075
 Project Number: 18075
 Drawn By: M Jensen
 Checked By: D Subweeks
 Date: 01/24/2020

Sheet No:
P2.1

BID SET - 01/24/2020